

# The European Commission's science and knowledge service

## Joint Research Centre



# A changing migration data landscape?

**Michele Vespe**

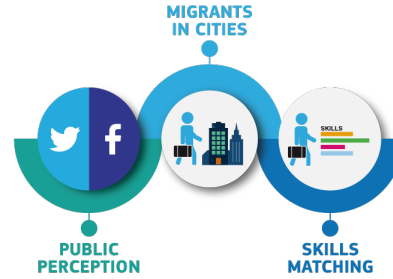
European Commission, Joint Research Centre,  
Knowledge Centre for Migration and Demography (KCMD)

# Knowledge Centre on Migration and Demography

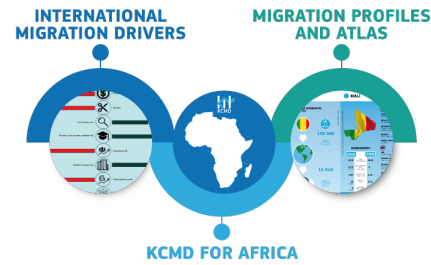


**KNOWLEDGE CENTRE  
ON MIGRATION  
AND DEMOGRAPHY**

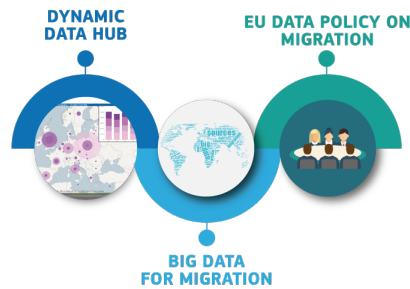
## INTERNAL DIMENSION



## EXTERNAL DIMENSION

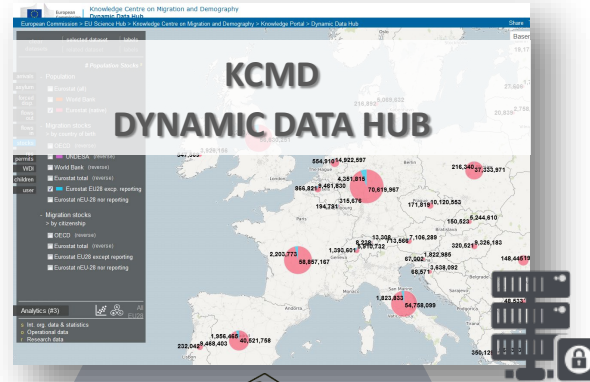


## DATA FOR MIGRATION



# KCMD Initiatives

Pre-processed data access & visual analytics



To help policy makers, researchers and stakeholders to *analyse* data

<https://bluehub.jrc.ec.europa.eu/migration/app/index.html>

~20 datasets

Discovered, filtered & quality checked catalogue of data sources



To help policy makers, researchers and stakeholders to *discover* and *use* data

<https://bluehub.jrc.ec.europa.eu/catalogues/data>

~140 datasets

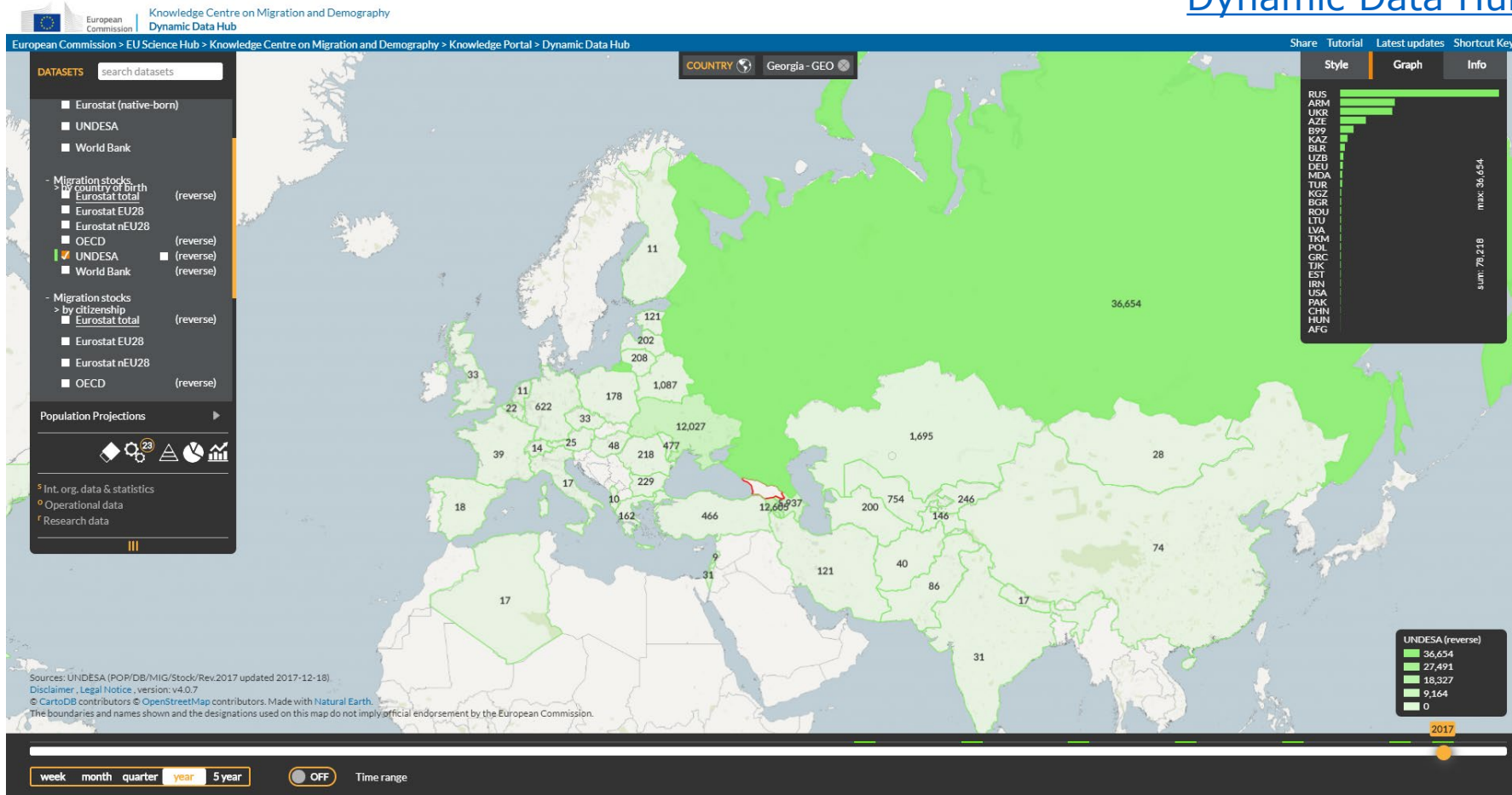
Fragmented & scattered data



# KCMD - Dynamic Data Hub

## Migrants in Georgia

### Dynamic Data Hub



Global stock of migrants by UNDESA

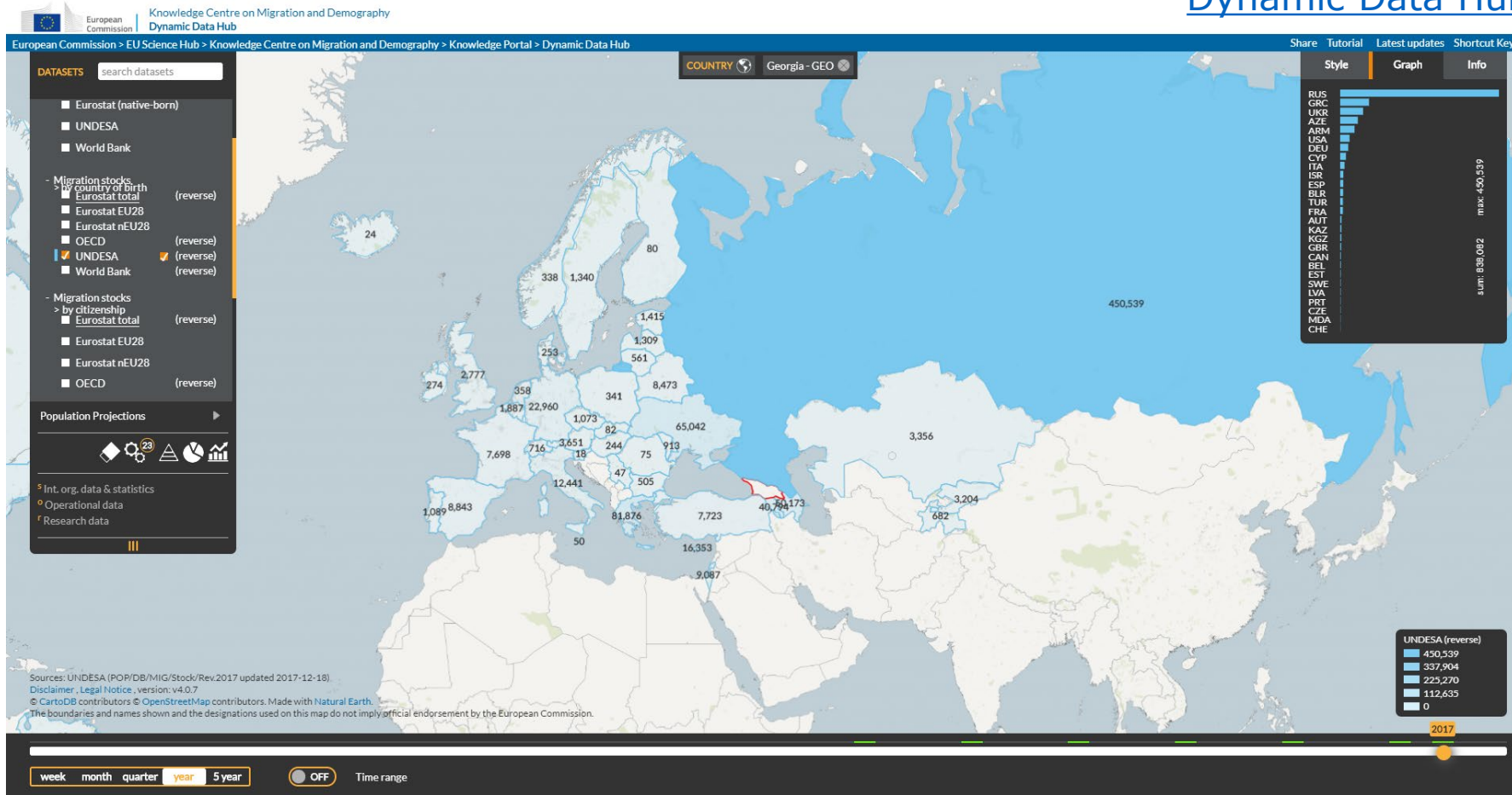
Latest revision just released - data for 1<sup>st</sup> Jan 2017



# KCMD - Dynamic Data Hub

## Georgian Diaspora (reverse function)

[Dynamic Data Hub](#)

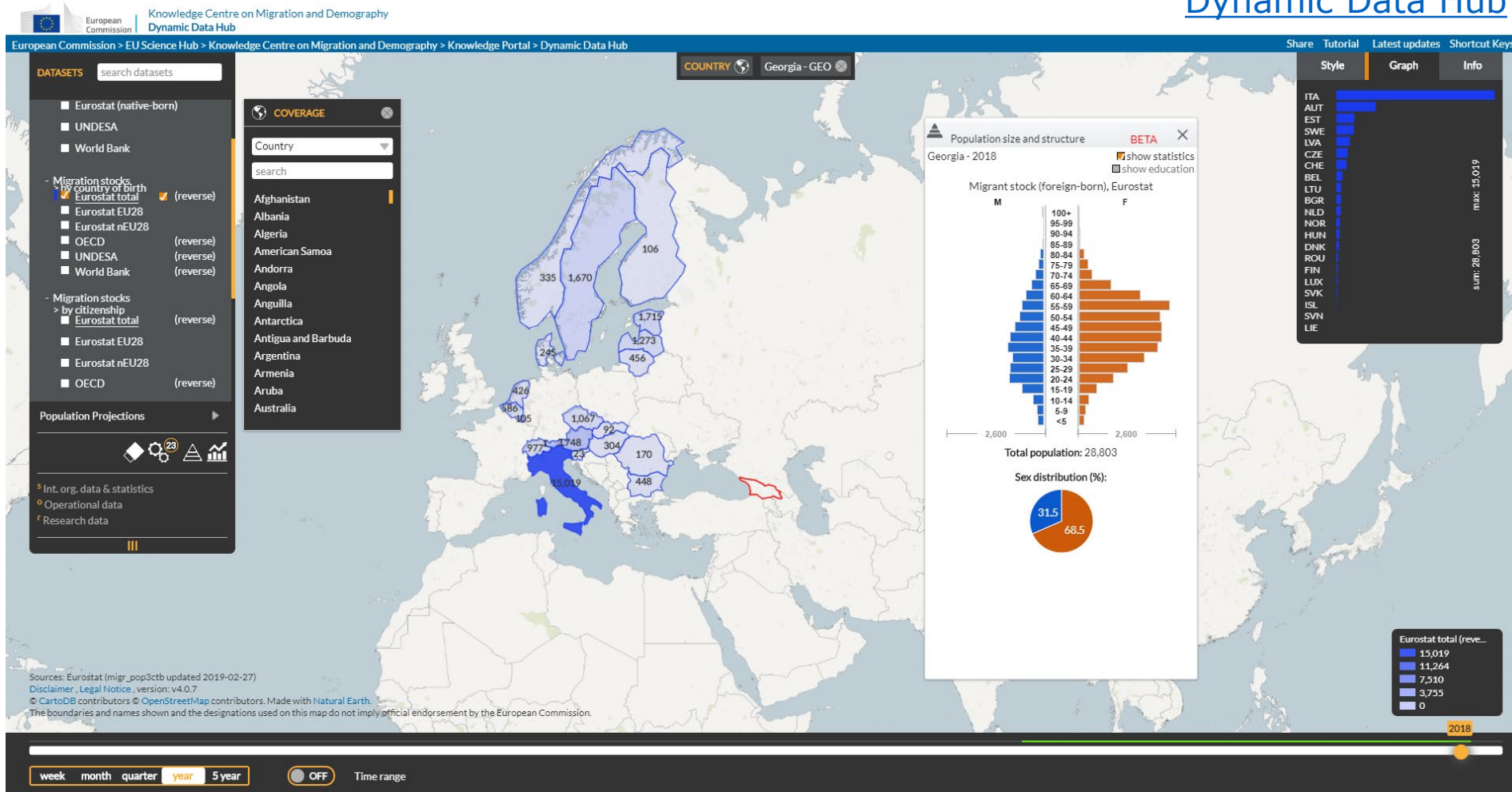


Global stock of migrants by UNDESA

Latest revision just released - data for 1<sup>st</sup> Jan 2017

# KCMD - Dynamic Data Hub

## Dynamic Data Hub



EUROSTAT statistics (reverse)

# Big Data for Migration (BD4M) Alliance



The European Commission and the International Organization for Migration launch the **Big Data for Migration Alliance (BD4M)**, a global initiative to unlock the potential of big data sources and provide valuable insights related to migration





## Migration data innovation potential:

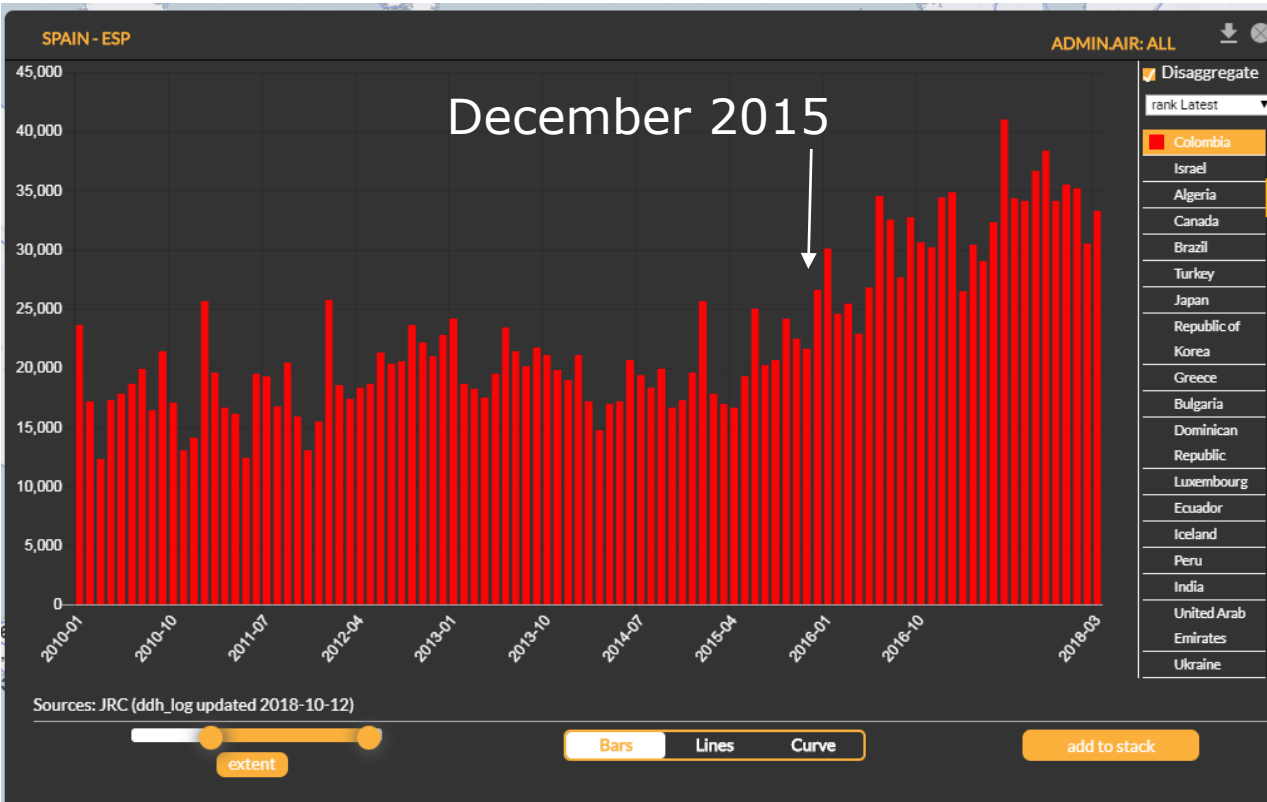
1. **Spatial Coverage & Periodicity** (e.g. Air Traffic Data)
2. **Timeliness** (e.g. Facebook)
3. **Characteristics** (e.g. LinkedIn)
4. **Granularity in space** (e.g. CDR)

## Migration data innovation potential:

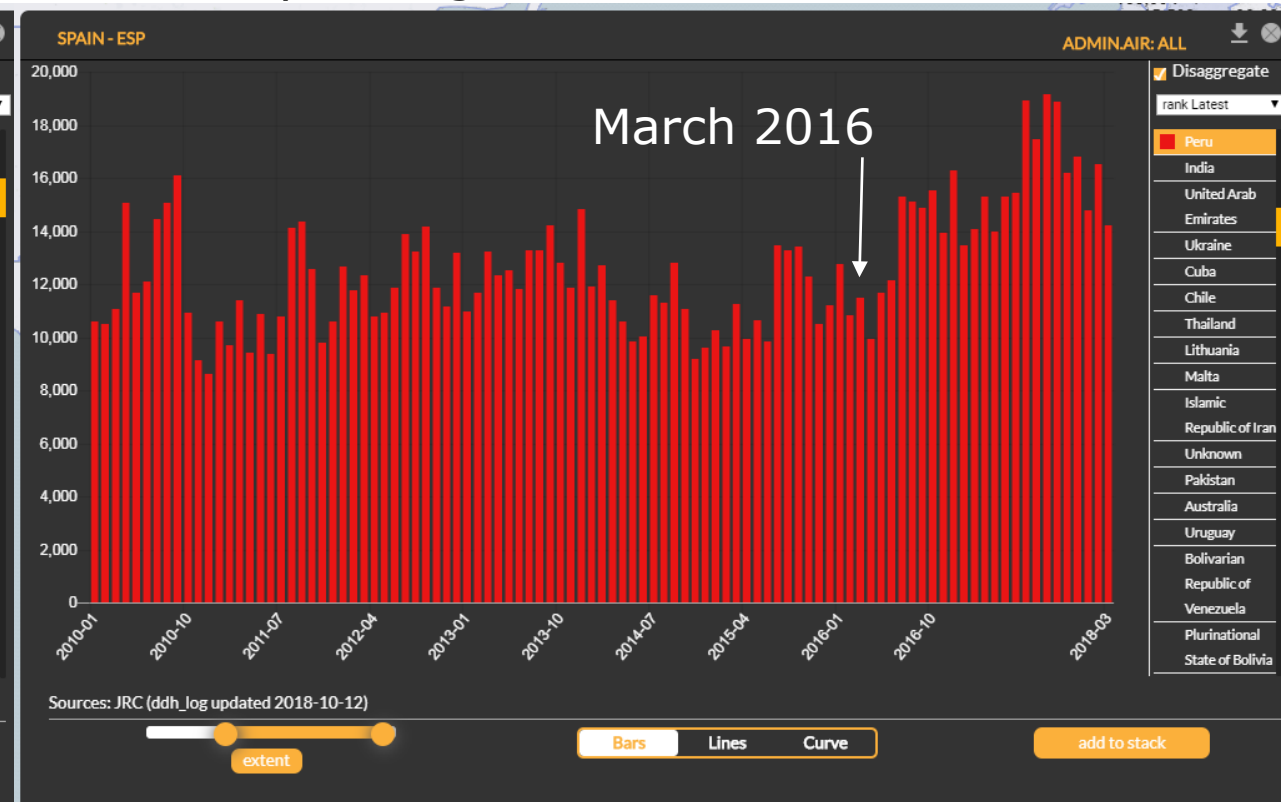
1. **Spatial Coverage & Periodicity** (e.g. Air Traffic Data)
2. Timeliness (e.g. Facebook)
3. Characteristics (e.g. LinkedIn)
4. Granularity in space (e.g. CDR)

# Migration data innovation potential I: Spatial Coverage & Periodicity

Air passenger traffic, COL→ESP

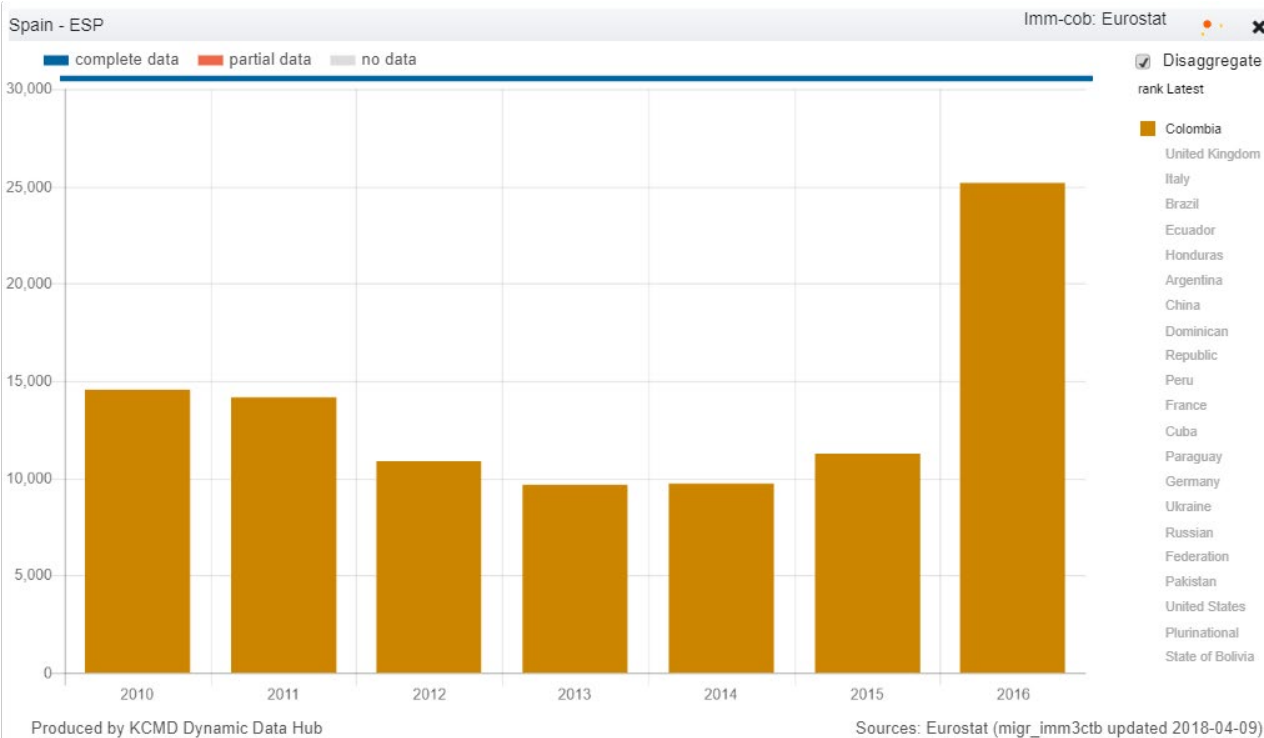


Air passenger traffic, PER→ESP



# Migration data innovation potential I: Spatial Coverage & Periodicity

## Migration flows, COL→ESP

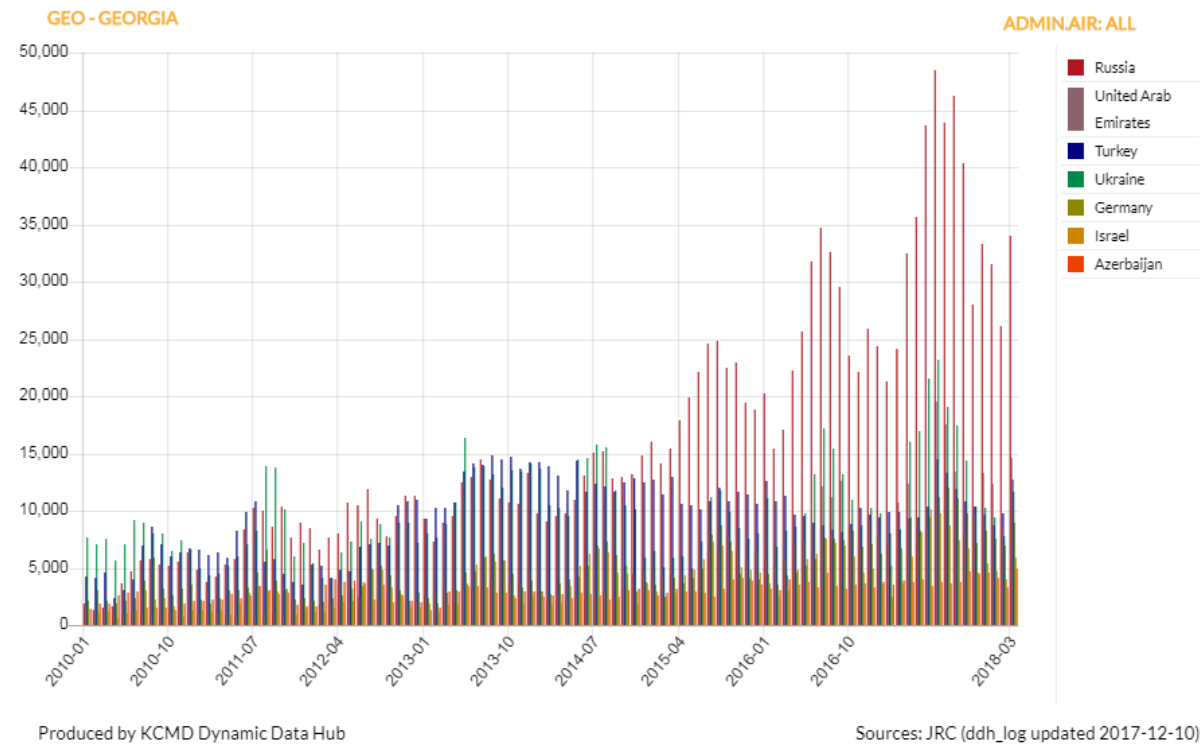
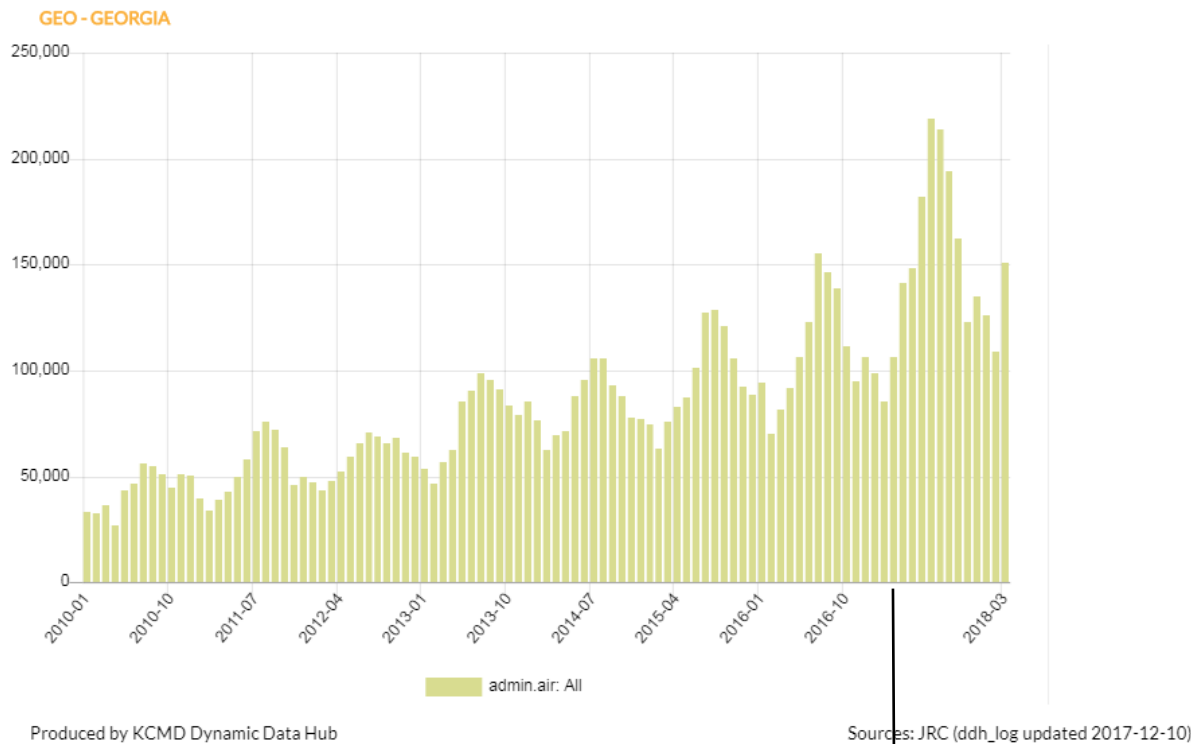


## Migration flows, PER→ESP





# Migration data innovation potential I: Spatial Coverage & Periodicity

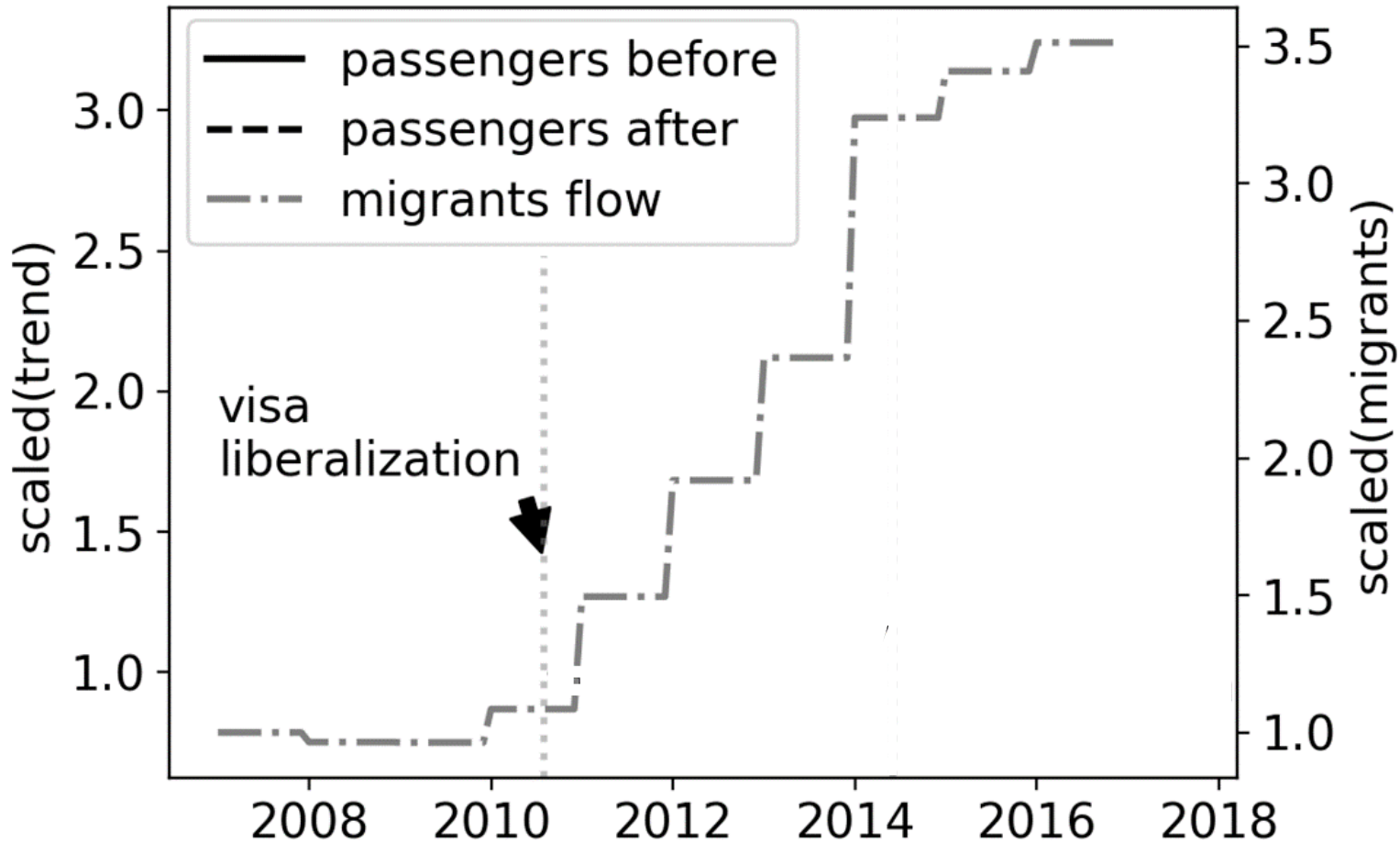


↓

Visa waiver for Georgia, 28 March 2017

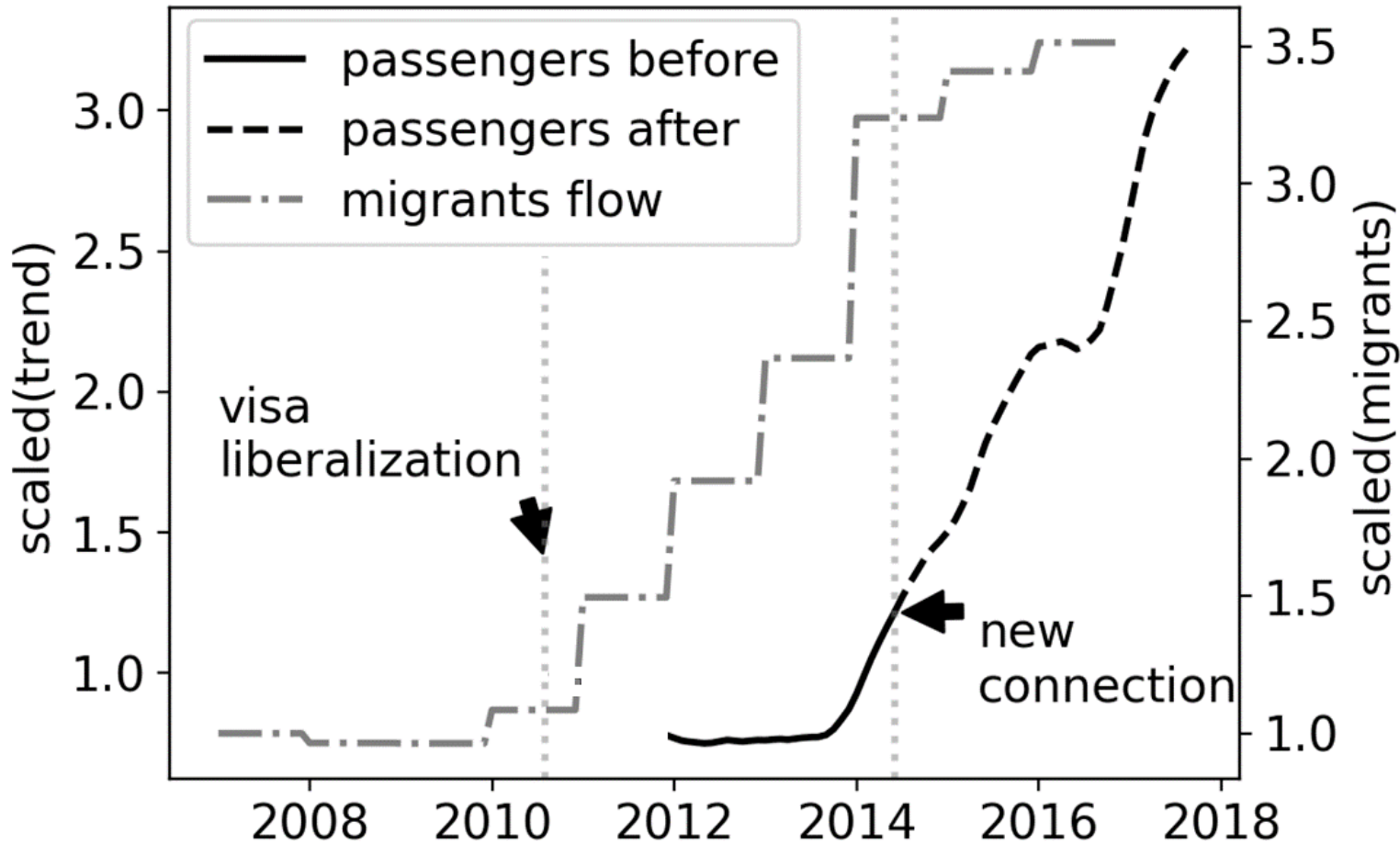
# Air traffic passenger data - Mobility

BIH->DEU



# Air traffic passenger data - Mobility

BIH->DEU



FRIDAY, NOVEMBER 16TH



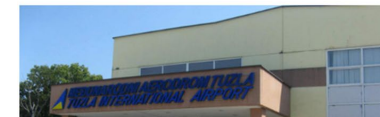
HOME POLITICS BUSINESS BH & EU BH TOURISM INTERVIEWS

INTERVIEW: Ms. Aida Hadzic, Oxford graduate who returned to BiH

You are here: Home » BUSINESS » "Wizz Air" in June Will Introduce Cheap Flights for Germany and the Netherlands from Tuzla Airport

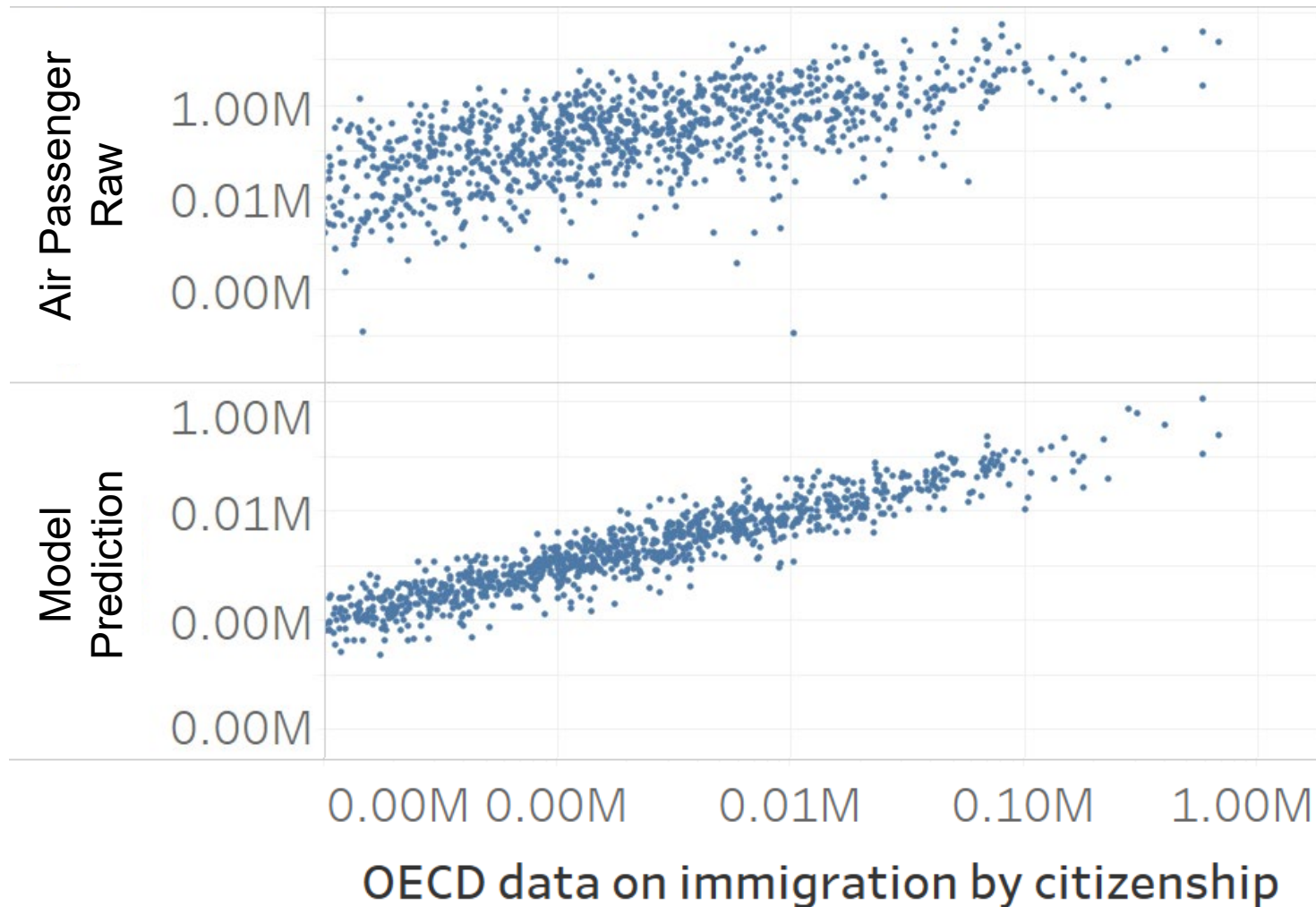
## "Wizz Air" in June Will Introduce Cheap Flights for Germany and the Netherlands from Tuzla Airport

APRIL 23, 2014 4:00 PM



The low-cost carrier "Wizz Air", which has flights from Tuzla international airport, will introduce two new flights from June 2014-for Dortmund in Germany and Eindhoven in the Netherlands, announced klix.ba.

# Migration data innovation potential I: Spatial Coverage & Periodicity



Taking into account:

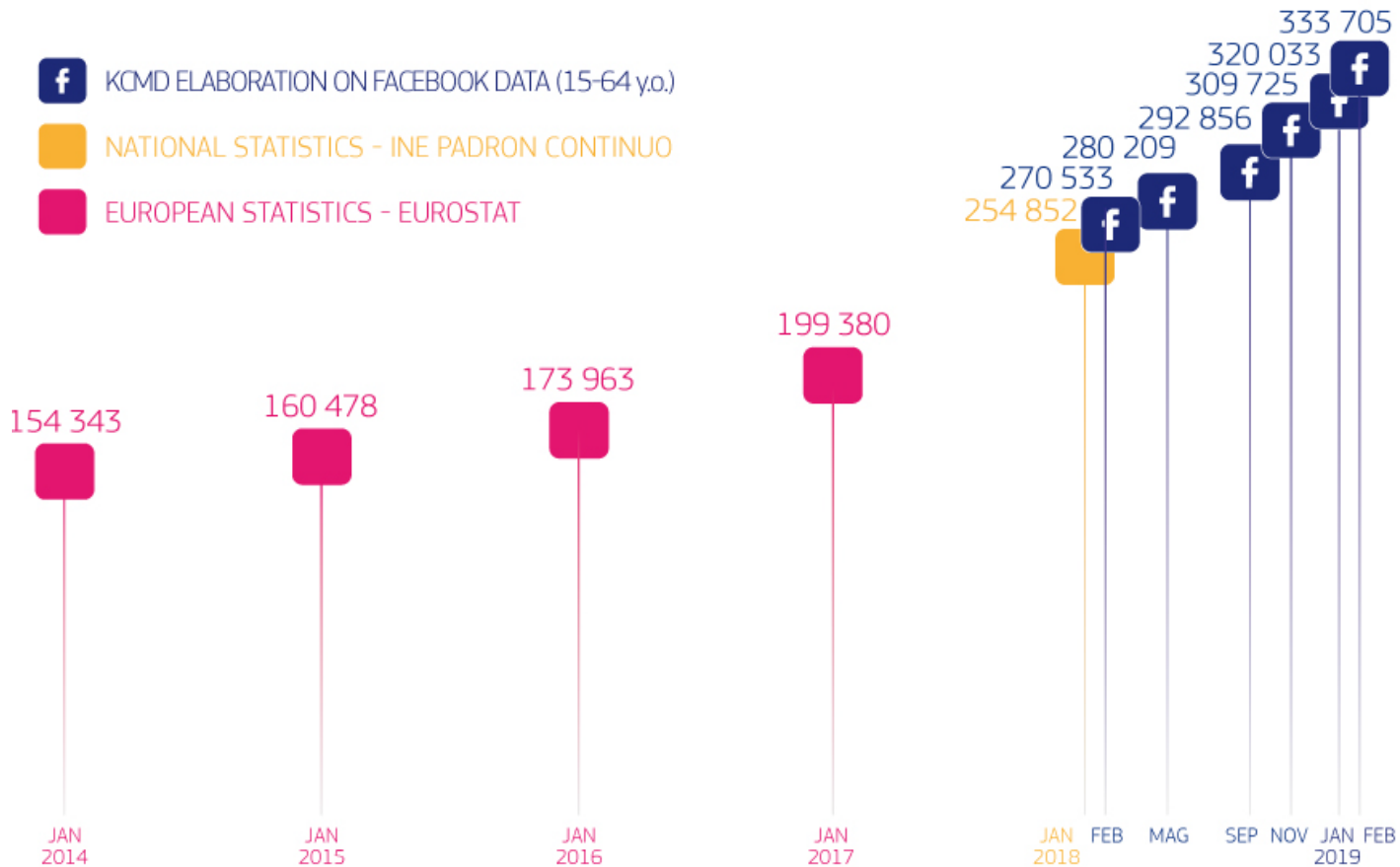
- Diasporas/networks
- GDP differential
- Trade & business
- Geographical distance
- Mobility channels



## Migration data innovation potential:

1. Spatial Coverage & Periodicity (e.g. Air Traffic Data)
2. Timeliness (e.g. Facebook)
3. Characteristics (e.g. LinkedIn)
4. Granularity in space (e.g. CDR)

# Big Data and non-traditional data for migration



Latest EU official statistics: 1-Jan-17,  
Spanish Statistical Office: 1-Jan-18

**Facebook** Advertising Platform data:  
high refresh rate – real time census

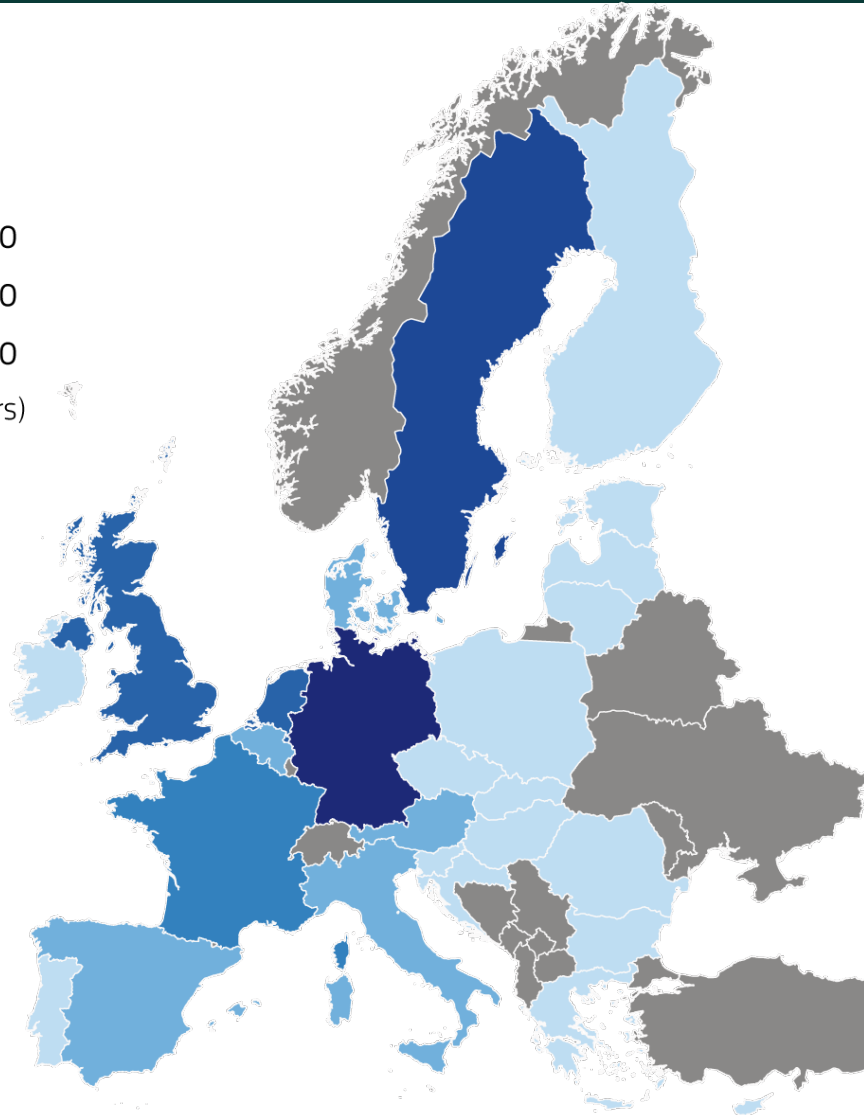
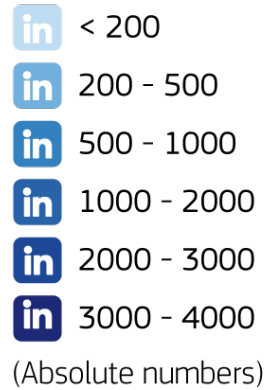
The research has provided insights to several  
Commission services

Venezuelans in Spain: latest **EU official statistics**, **Spanish Statistical Office**,  
**Facebook Network** data (improved frequency update & timeliness)

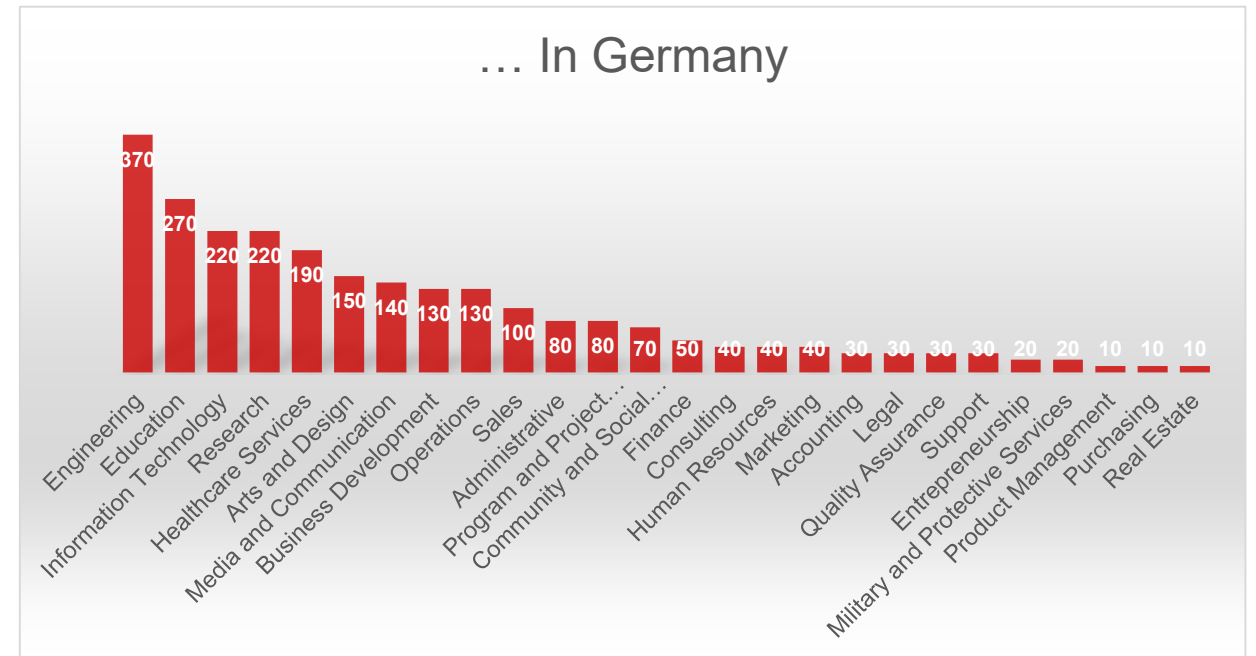
## Migration data innovation potential:

1. Spatial Coverage & Periodicity (e.g. Air Traffic Data)
2. Timeliness (e.g. Facebook)
3. Characteristics (e.g. LinkedIn)
4. Granularity in space (e.g. CDR)

# Migration data innovation potential III: Characteristics



## Example of highly-skilled migrants using LinkedIn advertising platform

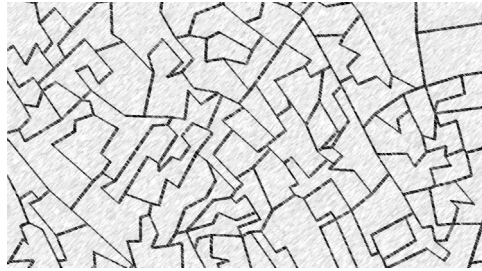




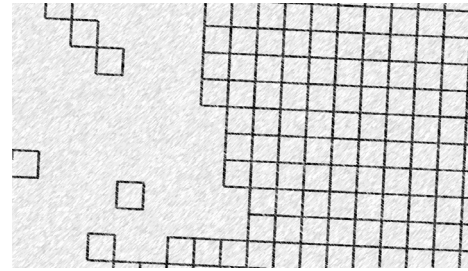
## Migration data innovation potential:

1. Spatial Coverage & Periodicity (e.g. Air Traffic Data)
2. Timeliness (e.g. Facebook)
3. Characteristics (e.g. LinkedIn)
4. Granularity in space (e.g. CDR)

# Migration data innovation potential IV: Granularity (space)



Census tract: ES, IT, IE, UK, FR

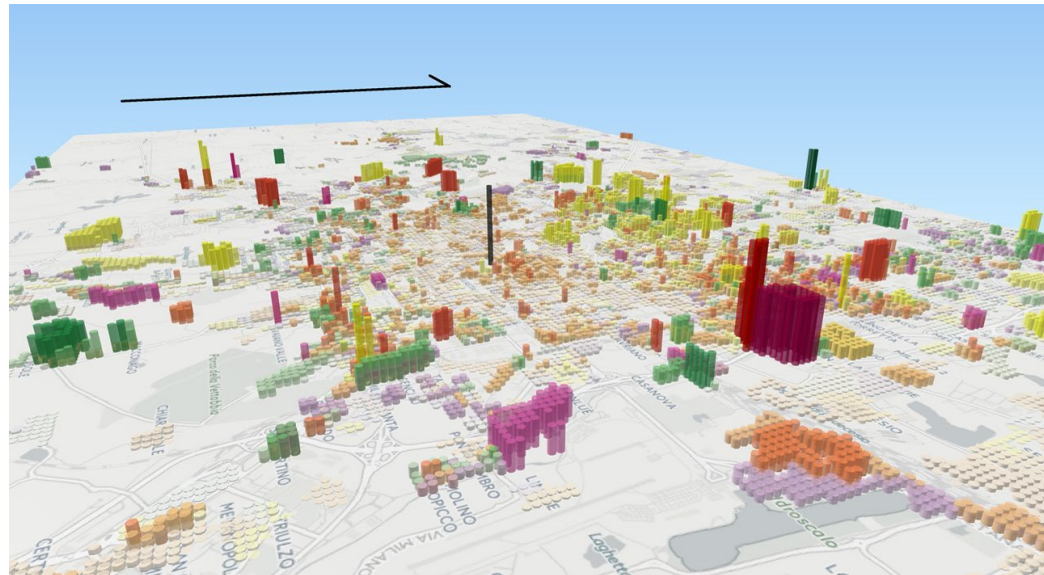


Grid 100x100 m: DE



Postal codes NL

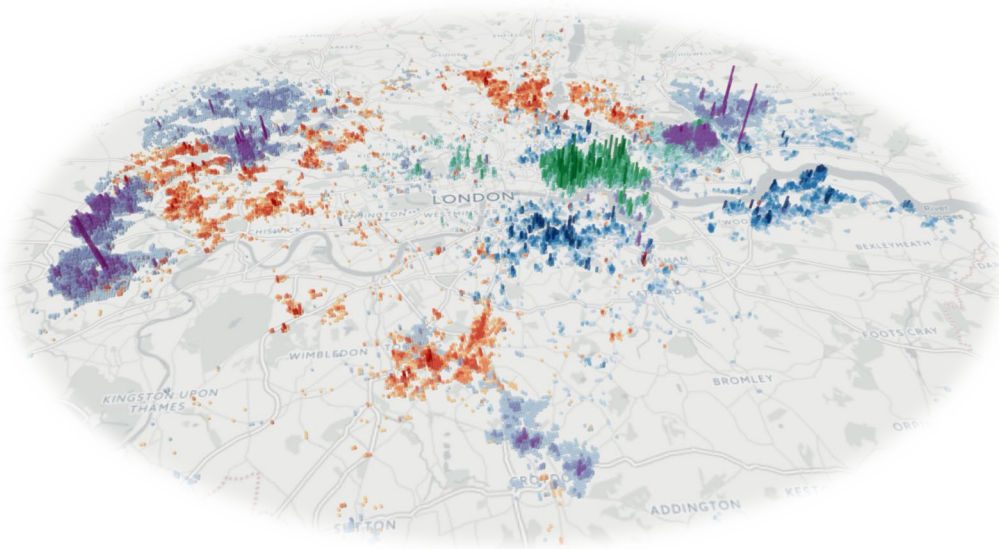
Assembling the data from  
Census 2011



**D4I** - Data for Integration  
**Data Challenge**

# Migration data innovation potential IV: Granularity (space)

## D4I - Data Challenge



### KCMD internal projects

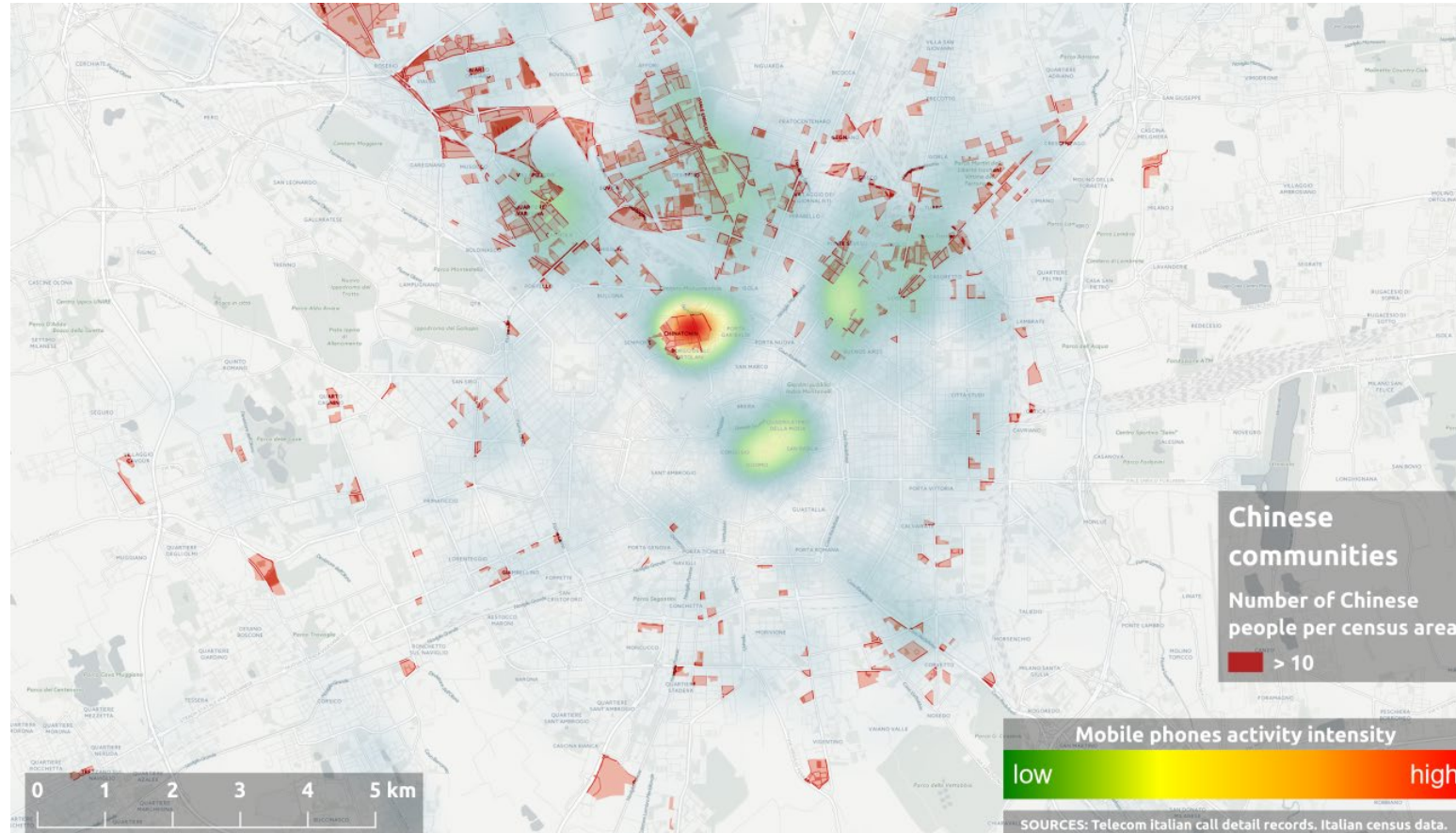
- Migration and housing market in Italy
- Migration and electoral outcomes (NL, IT, ES, DE)
- Temporal evolution of segregation (2001 vs 2011 Census)

### External projects through the Data Challenge

data science	NamSor Applied Onomastics NamSor SAS ISTI-CNR
diversity	Erasmus University Rotterdam University of Rome La Sapienza Institute for Research into Superdiversity, University of Birmingham London School of Economics and Political Science
housing	Gran Sasso Science Institute
labour market	University College London Migration Policy Centre, European University Institute, Florence The Vienna Institute for International Economic Studies
politics and sentiments	Bocconi University Graduate Institute of International and Development Studies, Geneva, Switzerland Cornell University
public services	Wissenschaftszentrum Berlin für Sozialforschung WZB Berlin Social Science Research Center University of Tartu, Estonia
segregation	Department of Political Sciences, University of Naples Federico II Université Paris 1 Panthéon Sorbonne University of Liverpool Universitat Autònoma de Barcelona Bremen International Graduate School of Social Sciences Institute of Geography and Spatial Planning-University of Lisbon
transport	Dublin Institute of Technology National Technical university of Athens Greece



# Migration data innovation potential IV: Granularity (space)



Density of mobile phone traffic with China and areas of highest concentration of migrants from 2011 Census

Sources:

- Italian Census Data &
- Call Detail Records, Telecom Italia



# Any questions?

You can find me at [@M\\_Vespe](#) & [michele.vespe@ec.europa.eu](mailto:michele.vespe@ec.europa.eu)